

# 8.1 continued (modelling)

Read ex 1) on pg. 427.

## Your Turn

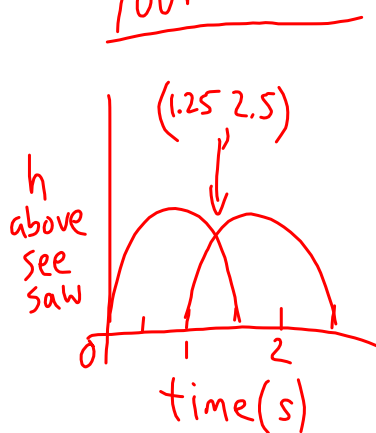
Dives from a 1-m & 3-m board, starting at the same time. System A

Read ex 4) pg. 430

Your Turn - do on calculator (-20, 4.6)  
(18.75, 4.7)

Read ex 5) pg. 432

## Your Turn



$$\textcircled{1} y = -8(x - 0.75)^2 + 4.5$$

$$\textcircled{2} y = -8(x - 1.75)^2 + 4.5$$

pg. 437-439  
# 10, 11, 13-15, 20